



**Jewish Family  
Service**

Caring for all  
Utahns since 1872

**President**  
Joy Erickson

**President Elect**  
Darcy Amiel

**Vice President**  
Marty Gelman

**Treasurer**  
Ann Bernstein

**Secretary**  
Kathryn Goddard

**Officer-at-Large**  
Lisa Treiman

**Honorary Board**  
Joyce Dolcourt  
Jay Jacobson  
Nomi Loeb  
Frank Yanowitz

**Board of Directors**  
Susan Arsht  
Dara Cohen  
David Dowsett  
Andrew Gruber  
Casey Lebwohl  
Erin Litvack  
Donna Milavetz  
Elissa Oshinsky  
Steve Panish  
Hal Pos  
Lavine Shapiro  
Marty Slattery  
Liz Tashijan  
Page Witt

**Executive Director**  
Ellen Silver, LCSW

495 East 4500 South, Suite 100 \* Salt Lake City, Utah 84107 \* 801-746-4334

650 Round Valley Drive \* Park City, Utah 84060 \* 435-640-6697 \* [www.jfs.org](http://www.jfs.org)

## State of the Agency 2019 Joy Erickson, President



*Strengthening individuals and families of all backgrounds through counseling, advocacy, care management and education.*

*This letter was written prior to COVID-19 and reflects events that occurred in 2019.*

Jewish Family Service is positioned to meet the increasing needs in our community. We are ON THE MOVE, both literally and figuratively.

It's safe to say that this past years' events accelerated our growth and demanded that we think differently about the needs and complexity of our community. Some of these events were planned while others were not. In both cases, our challenges were met by the thoughtful leadership from members of our Board of Directors, staff, donors, and volunteers.

The events in 2019 presented both challenges and opportunities.

We had two major and unexpected events. The first was opening our new Park City office at year ahead of our plan. This happened because the perfect space, in the perfect location, at an affordable price became available. The ONLY hitch was that we had to ACT rapidly on this opportunity. In order to make this work we raised additional resources, which we did by attracting nine Park City office "FOUNDERS," including one anonymous donor who established an Endowment to benefit the Park City office.

These generous gifts allowed us to open the office and provide affordable mental health services, to the most needy and under served members of the community, receive wide-ranging public awareness, and generally raise our stature in the broader Park City area. We have MUCH more to do! As soon as we hire another bilingual mental health counselor we will better meet the growing demand for our services. We also intend to offer aging services, and other successful programs that we offer in the Salt Lake City area.



## Program Accomplishments 2019

...continued from page 1

The second event happened within days of opening the Park City office. Without warning we received notice that our existing office space was sold and being demolished. We had to be out by April 1, 2020. This was a major shock to us, and we had no choice but to find a new office space.

It is with gratitude to our Board of Directors, JFS staff, generous donors and consultants we have opened our new office in Salt Lake City. This was no easy task! Led by our Executive Director, Ellen Silver, who spent days looking for workable and affordable space, negotiating a lease agreement, meetings with contractors, design people, technology and security experts, paid off. On May 31, 2020, we will open our doors to all of you and share our Volunteer Thank You event in our new office space! I hope to see YOU there! Please watch for your invitation. By the way, while all this was happening, we continued to manage the agency in our usual efficient manner.

Please take a moment to review this 2019 State of the Agency document. It is full of interesting and valuable information about our programs, services, and our transitions! We are ON THE MOVE, and by LENDING YOUR NAME to one of many intriguing naming opportunities for our new Salt Lake City or Park City offices you become part of our legacy. Information about these naming opportunities has been included in this report.

Without you and your generous support, there is no Jewish Family Service in Utah. THANK YOU SO VERY MUCH for years of passion and dedication to JFS and our mission to help ALL people through the unexpected and difficult challenges of life.

I look forward to greeting you all at the annual Volunteer Thank You event on May 31, 2020.

With Gratitude,



Joy Erickson  
President

- Over 3,500 hours of services in our Salt Lake and Park City Offices by licensed professional therapists to 650 individuals, couples and families. Services are provided in English and Spanish.
- Over \$18,000 in Emergency Assistance to prevent homelessness for 350 individuals, assisting with necessities like rent, utilities, and medication.
- 11,697 volunteer hours of service to support the programs of JFS, including friendly visiting, senior companions, transportation and errand assistance for clients, event planning, and office support.
- Over 76,000 pounds of food—from the Utah Food Bank, plus generous food donations from The Church of Jesus Christ of Latter-day Saints Humanitarian, food drives at Congregation Kol Ami and Temple Har Shalom, nai Mitzvah projects, McGillis School, other community organizations and individual donors—distributed to 11,006 individuals (2,681 families facing food insecurity).
- Project Encourage/Caregiver Connection helped 580 older adults age in place. Services provided include care planning and management, respite, counseling, nutrition assistance, emergency financial assistance, Music & Memory, Gleeful!...A choir for dementia care partners, volunteer services and creative arts. Our caregiver support group meets monthly to provide education related to caregiving, and provides respite.
- Outreach, socialization and education through our Lunch Bunch groups for people over 60. 78 people participate in these monthly groups.
- Writing workshops: Writing Through Grief supplements the healing of our counseling services for people dealing with loss, and Re--Imagining Your Life teaches that creative aging will help people find new directions as they approach their senior years. A new class offered in 2019, is Writing Through Anxiety.
- The Parent Plus Program taught skills to enhance and strengthen family relationships to parents and their children.
- The Refugee Assistance Fund has helped more than 82 families (356 individuals) in 2019, helping refugee families successfully transition to life in Utah.
- The Mind-Body Skills Group provided scientifically proven techniques to improve physical and emotional health to 24 individuals.



## Daniel's Story

A family JFS provided help to



We had a family come to the food pantry last fall. They were homeless and had been for an extended period of time. They had a nine year old boy named Daniel. He had never known his own home, nor had his own space. We helped them get food and we also helped them pay a deposit for a new apartment. While the apartment was affordable they didn't have the means to get the entire security deposit. With JFS' help, they were able to live in a home for the first time in years! We were also able to use our grant from Deseret Industries, to help them furnish their new apartment. Their family was really grateful for our help, and we were so happy to help them as much as we could.

This story shows the importance of having a consistent person (Safety Net Coordinator) greeting and providing services to the individuals and families seeking help through JFS' Food Pantry. The Safety Net Coordinator monitors each client's situation and refers them to other JFS and community programs that may assist them. The Safety Net Coordinator is also an initial point of entry to emergency financial assistance provided by JFS.

## Program Accomplishments

Caring for all Utahns since 1872



**Affordable Mental Health Counseling** - Over 3,500 hours of counseling provided in our Salt Lake City and Park City offices by licensed professional therapists to 650 individuals and families. Services are provided in English, Hebrew and Spanish.

**Writing Groups** - Writing through Grief, & Writing through Anxiety supplement our counseling program, Re-Imagining Your Life teaches that creative aging will help people find new directions as they approach their senior years.

**Emergency Assistance**  
Over \$20,000 to prevent homelessness for 350 individuals assisting with rent, utilities, prescriptions and transportation.

**Volunteers**  
11,697 hours of volunteer service to support the programs of JFS, including friendly visiting, senior companions, transportation & errand assistance for clients; an average of 975 hours of service per month.

**Parent Plus Program**  
Taught skills to enhance & strengthen family relationships to 37 family members in 2019.

**The Refugee Assistance Fund** has helped more than 356 individuals and 82 families successfully transition to life in Utah.



## Alex & Sally Lebwohl Food Pantry

Over 76,195 pounds of food from the Utah Food Bank, plus generous donations from The Church of Jesus Christ of Latter-day Saints Humanitarian, food drives at Congregation Kol Ami and Temple Har Shalom, B'nai Mitzvah projects, McGillis School, other community organizations and individual donors-distributed to 11,006 individuals and 2,681 families.

We are delighted to announce we have received a generous donation to name our Food Pantry, **The Alex & Sally Lebwohl Food Pantry**. Alex and Sally have passed away and their family wanted to honor them and their story. Alex was a survivor of the Holocaust and always brought food to those who were sick and too weak to get food on their own. The Alex & Sally Lebwohl Food Pantry carries on their legacy of service to others.



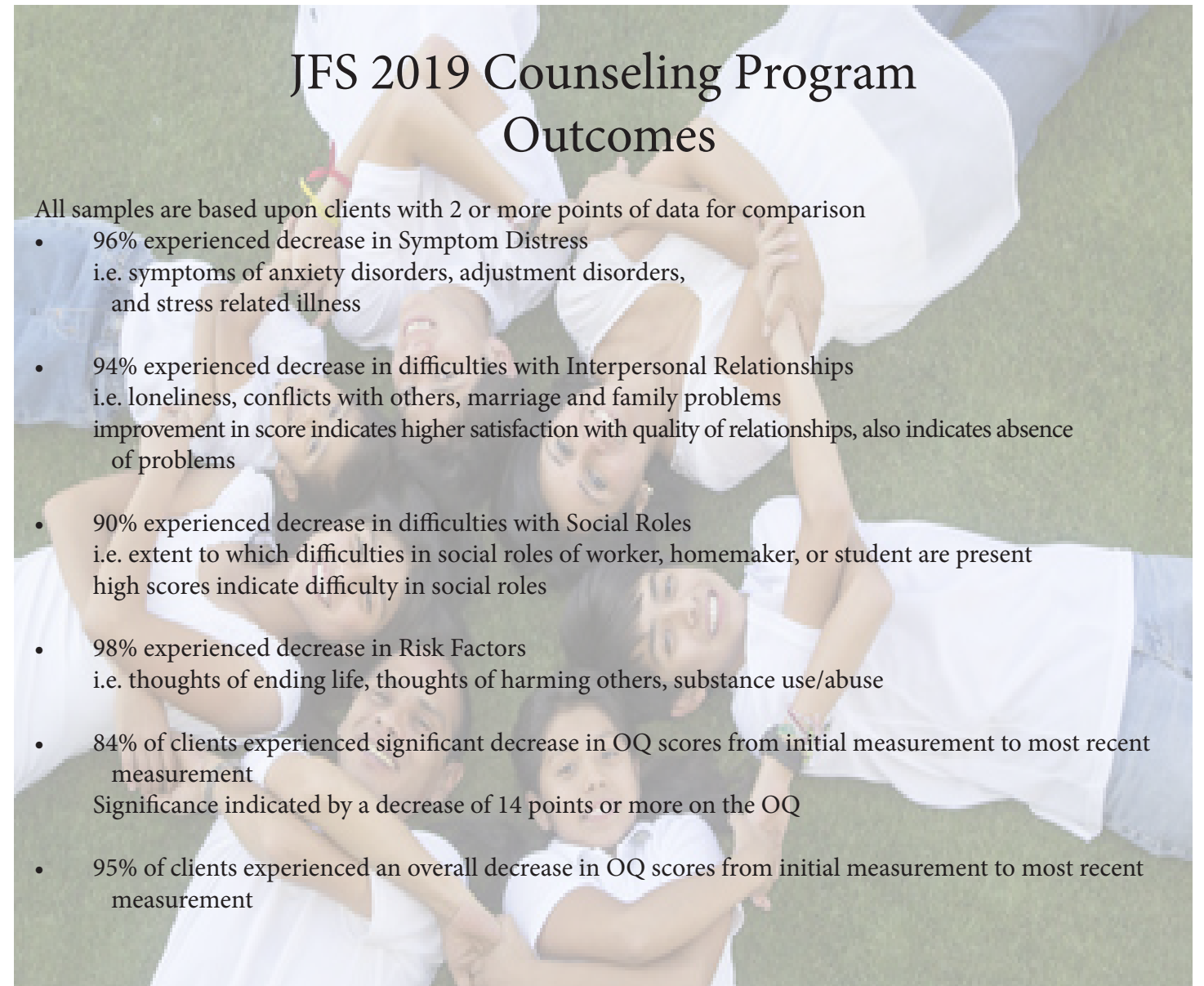
## Jewish Family Service Affordable Counseling

JFS provided over 3,500 units of service, on a sliding fee scale, to 650 individuals in 2019. We have expanded our services in Park City by moving out of our small office at the People's Health Clinic and into a larger office space of our own. JFS' new office opened the first week of July, 2019. We have been asked to work on a special Collective Impact project with United Way in Park City to address the "achievement gap" at McPolin Elementary. Currently, we have one full time bilingual Spanish speaking mental health counselor, providing counseling to the Latinx community three days a week in Park City and two days in Salt Lake City. We hope to hire a second full time bilingual counselor for our Park City office.

### JFS 2019 Counseling Program Outcomes

All samples are based upon clients with 2 or more points of data for comparison

- 96% experienced decrease in Symptom Distress  
i.e. symptoms of anxiety disorders, adjustment disorders, and stress related illness
- 94% experienced decrease in difficulties with Interpersonal Relationships  
i.e. loneliness, conflicts with others, marriage and family problems  
improvement in score indicates higher satisfaction with quality of relationships, also indicates absence of problems
- 90% experienced decrease in difficulties with Social Roles  
i.e. extent to which difficulties in social roles of worker, homemaker, or student are present  
high scores indicate difficulty in social roles
- 98% experienced decrease in Risk Factors  
i.e. thoughts of ending life, thoughts of harming others, substance use/abuse
- 84% of clients experienced significant decrease in OQ scores from initial measurement to most recent measurement  
Significance indicated by a decrease of 14 points or more on the OQ
- 95% of clients experienced an overall decrease in OQ scores from initial measurement to most recent measurement





## Program Accomplishments - Older Adult Programs



## Music & Memory

Caregivers find that Music & Memory calms or/ improves the mood and communication with their loved ones with Alzheimer's disease or other forms of dementia.



## Project Encourage/Caregiver Connection

JFS promotes general well-being for older adults through a model of coordinated care, prevents pre-mature placement of clients in long-term care facilities, helps individuals age in place, and supports family members and other caregivers as they cope with challenges they or their aging loved ones face. Our programs support older adults healthy aging by providing services that allow them to remain in their own homes and communities.

580 older adults were served through a variety of programs including, care planning & management, respite, counseling, nutrition assistance, emergency financial assistance, Music & Memory, Gleeful!...a choir for dementia care partners, volunteer services and creative arts. Our caregiver support groups meet monthly to provide education related to caregiving and respite.

Music & Memory is one of the first proven programs to help individuals with dementia. Participants are given an iPod containing music that is personally meaningful to them and which evokes memories of earlier life experiences.

The music engages the mind and helps people reconnect with the world and those around them through music triggered memories. The reduced agitation and improved cooperation described by our client families improves the wellbeing of the individual with dementia and of their caregiver. JFS pairs these proven results with a thorough clinical and family assessment so we can connect clients and caregivers with other agency or community programs that could help their personal situations.

**The Lunch Bunch** Outreach, socialization and education for people over 60. 78 people participate in these monthly groups.





## Gleeful!...a Choir for Dementia Care Partners

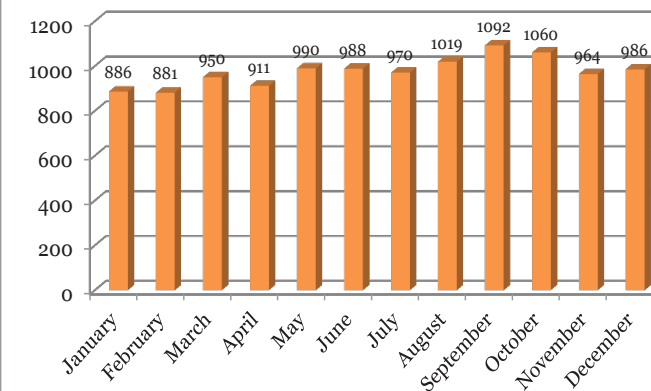
It is a valuable extension of Music & Memory. It provides an opportunity for people in the early to middle stages of dementia, together with their caregivers, to have fun, enjoy music, and socialize without being stigmatized. Choirs such as these currently exist in other states and countries, and experts in dementia report that choir participants experience improved memory, mood and learning. The choir currently has 35 members. They meet weekly and perform 4-5 times per year. The choir has performed at the JFS Annual Tribute Dinner, the Jewish Community Center, Area Agencies on Aging and Senior Centers.

A music therapist directs the choir. JFS social workers refer families to it, educate participants about JFS services, and facilitate individual referrals as needed. Like the Music & Memory program, the choir is an effective point of entry to agency services such as respite, mental health counseling and caregiver support. Participation in Gleeful!, is offered free of charge.



### Jewish Family Service Volunteer Program Year End Report 2019

2019 Hours of Service by Month



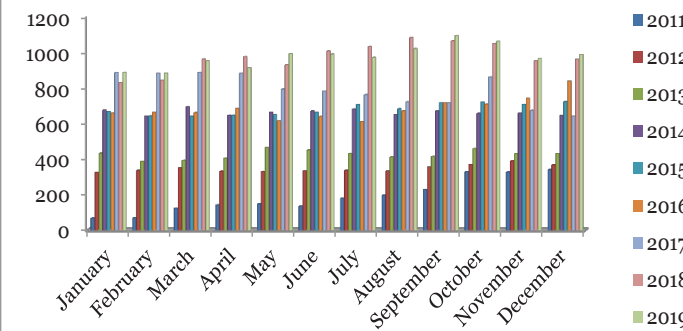
**In 2019:**

- 11,697 hours of volunteer service
- Volunteers provided an average of 975 hours of service per month
- More than **11,000** Food Pantry patrons were served by JFS Pantry volunteers & staff

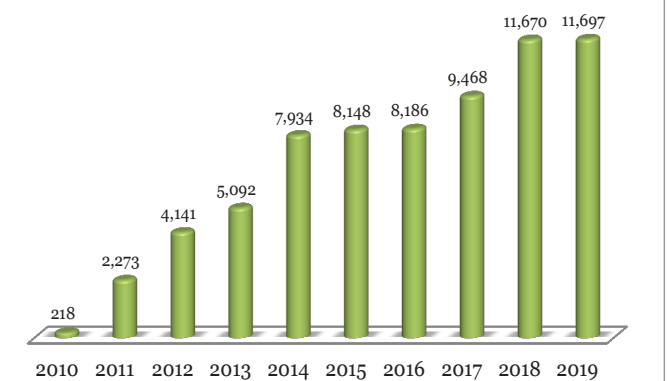
**We are pleased to have our largest volunteer program to date, with:**

- 35 friendly visitors saw 52 clients
- 10 Senior Companions provided companionship to 50 clients
  - 57 Food Pantry Volunteers
- 7 Academic Interns provided counseling & support services
  - 17 Lunch Bunch Volunteers assisted 78 participants
  - 14 Support Volunteers provided office assistance
    - 8 Recycling Volunteers
- 22 Board Members & 10 Tribute Committee Volunteers

Yearly Comparison of Volunteer Service



Hours of Volunteer Service by Year



The average value of a volunteer's time in Utah is now valued at \$25.43 per hour. By that standard, our volunteers provided a value of more than **\$297,454.00** in time and service in 2019.

\*Reference: Bureau of Labor Statistics



We ♥ our Volunteers

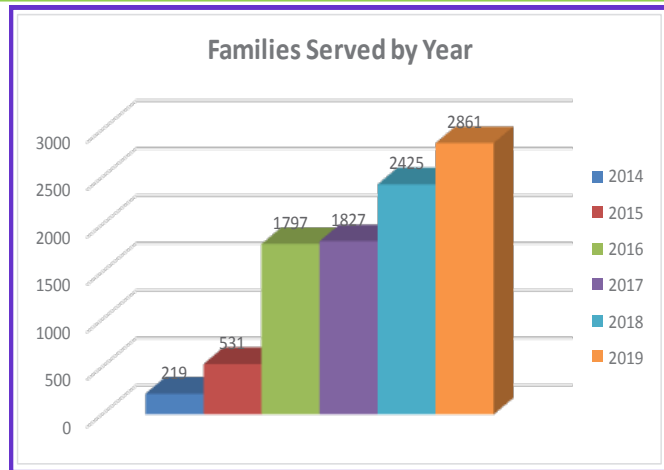
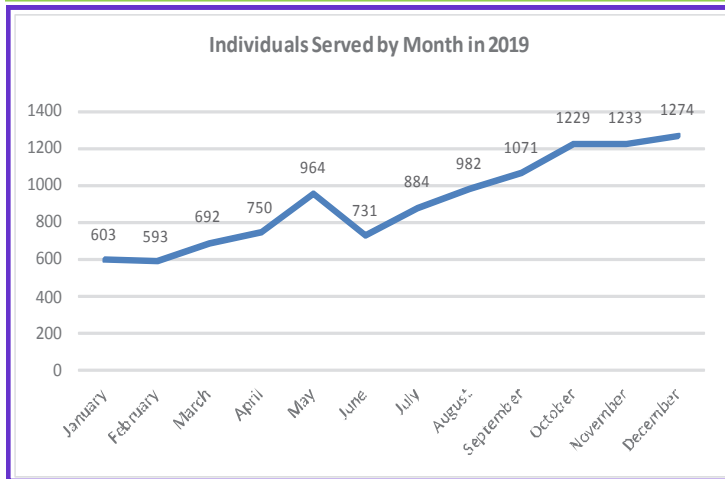


**Caregiver Support Fund**  
 Out of respect for the important job of adult care as she managed long distance caregiving for her father, Susan Schulman saw a need and decided to make a difference.

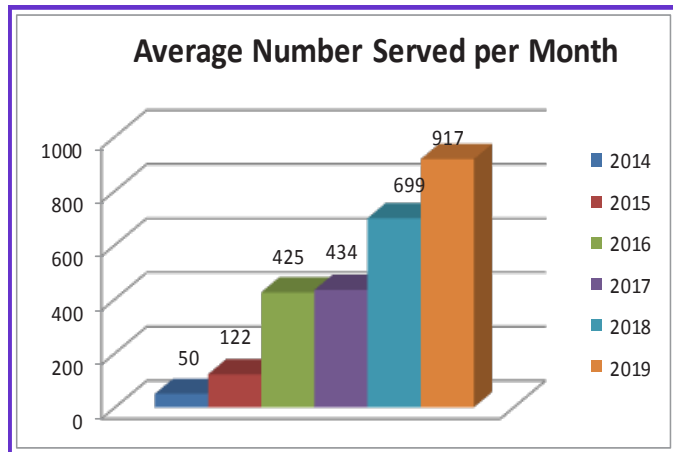
“My hope is to help them do their job as best they can, and to ensure that high-quality caregivers are helping our aging parents or spouse or other loved one needing assistance. In addition, top quality caregivers are a must for those without family, who must face illness and aging on their own.”

*Susan Schulman*

**Jewish Family Service 2019 Emergency Food Pantry Report**



Year	Pounds of Food	Families Served	Individuals Served
2014	5,226	219	604
2015	19,706	531	1,469
2016	60,430	1,797	5,108
2017	61,006	1,827	5,219
2018	63,997	2,425	8,831
2019	76,195	2,681	11,006



**Kieda Self-Sufficiency Fund**  
 The newest endeavor at JFS is the Walter & Theresa Kieda Self-Sufficiency Fund. Lisa Goldstein Kieda and David Kieda were inspired to set up a fund in memory of David's parents.

They want to assist those faced with the challenges of a transition in their life. This fund supports clients in our mental health program.

For more information contact Ellen Silver at 801-746-4334 X 104 or [ellen@jfsutah.org](mailto:ellen@jfsutah.org).

**Community Partners:**

Utah Food Bank/TEFAP | Congregation Kol Ami | 211 | Temple Har Shalom | Jewish Community Center | The McGillis School Rowland Hall | Clyde, Snow, & Sessions Law Firm | Backyard Garden Share | LDS Church Bishop's Storehouse | Waste Less Solutions

We've also benefitted a great deal from the priceless support of many exceptional volunteers, including individuals, family groups, community and religious groups, and scout troops!



## Caregiver Support Fund

Are you a Caregiver? Does your family use an independent Caregiver?

JFS can help pay for professional training and other ways to support independent caregivers serving Utah's Jewish Community. This fund was founded from a heartfelt desire to help those helping our community by allowing them to be the best they can be at this difficult work of caring for the infirm. JFS is grateful to Susan Schulman for funding this important work.



## Refugee Assistance

JFS provides emergency assistance to refugees through referrals from a variety of local resettlement organizations. In 2017, Carol & Ted Levy were inspired to help the refugee community. In partnership with

Jewish Family Service, their inspiration has created a fund to assist refugees in Utah. The Refugee Assistance Fund helped over 82 families (356 individuals) in 2019 with everything from tuition to help with rent and utilities, when the family bread winner was injured or ill. The Levy's said, "The level of support has exceeded our expectations and we hope to expand support as we appeal to the greater Jewish community."

## *We are thankful to our Foundation and Corporate Partners*

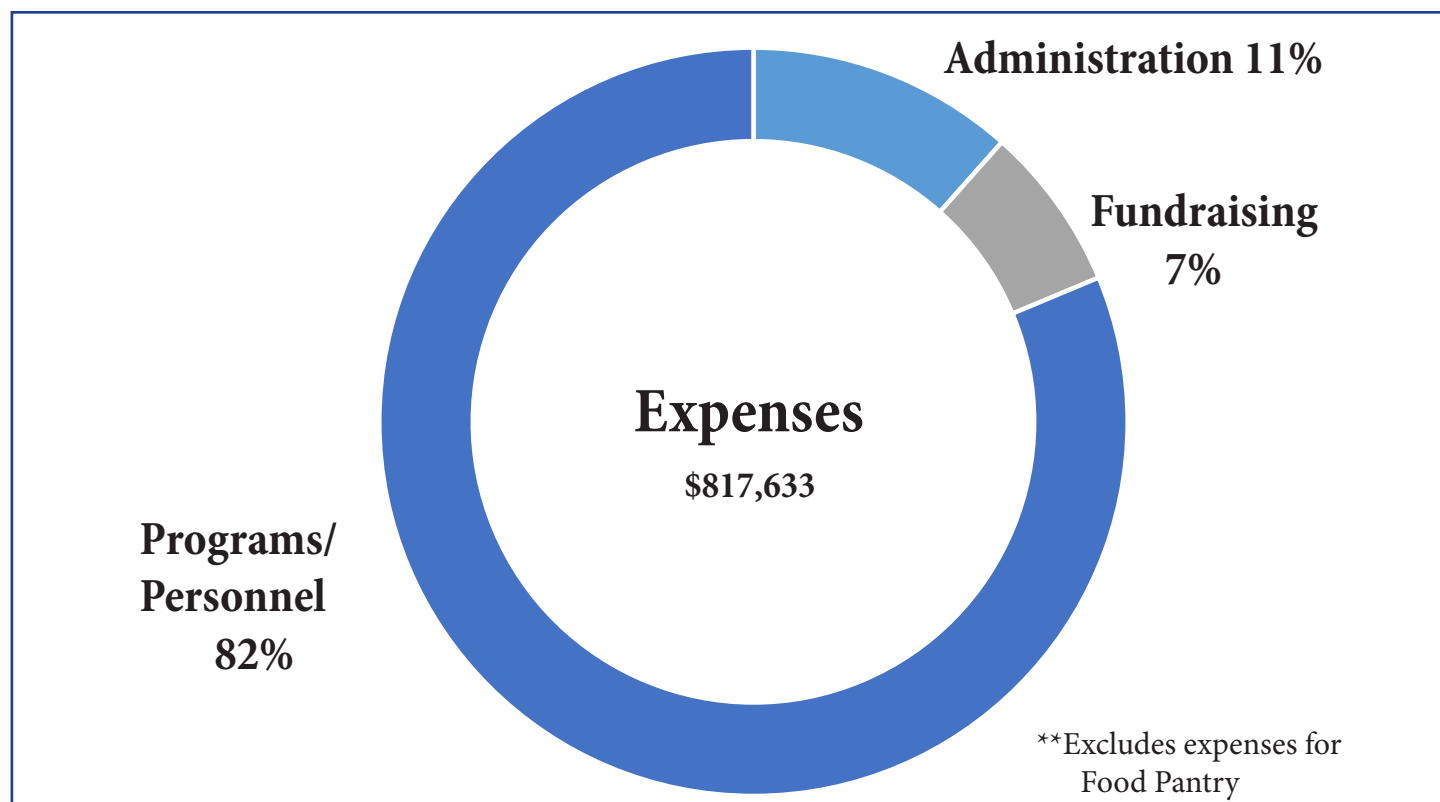
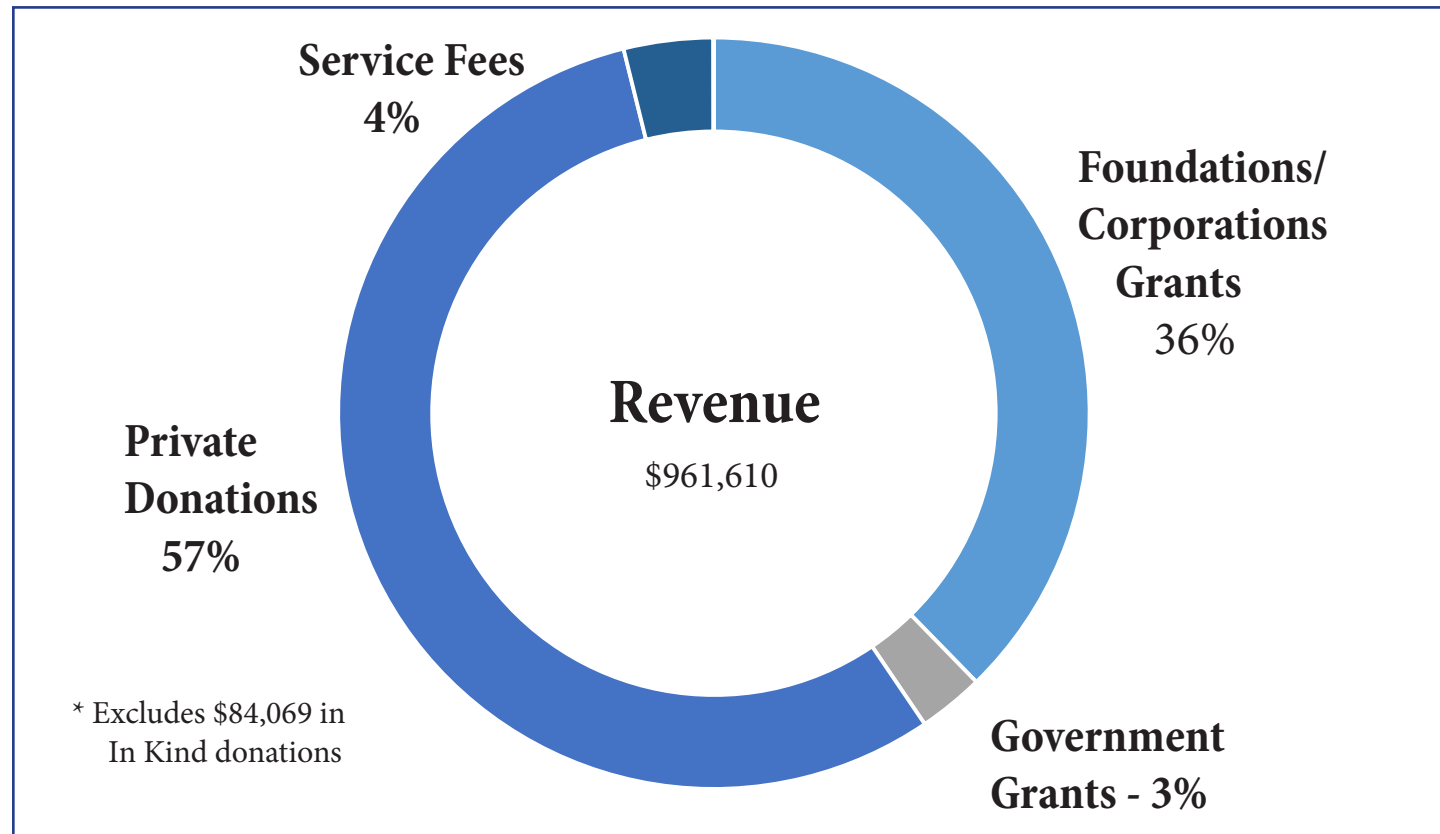
\* American Express Center for Community Development  
 \* Castle Foundation \* The Church of Jesus Christ of Latter-Day Saints Foundation \* The Daniels Fund \* The David Kelby Johnson Memorial Foundation \* George S. & Dolores Doré Eccles Foundation \* The Gillmor Foundation \* Healthy Senior Collaborative \* Herbert I. & Elsa B. Michael Foundation \* Intermountain Community Care Foundation & Community Partner Fund \* The Jarvis & Constance Doctorow Family Foundation \* Kahlert Foundation \* King Family Foundation \* Larry H. Miller Charities \* Lawrence T. & Janet T. Dee Foundation \* Marriner S. Eccles Foundation \* McCarthy Family Foundation \* Music and Memory \* Park City Community Foundation \* R. Harold Burton Foundation \* Rocky Mountain Power Foundation \* Salt Lake County Community Development Block Grant \*

## *In Kind Donations*

Ballet West \* Joan Alper & Bill Becker \* Bill Child \* Pattie Christensen \* Pati & Val Comes \* Cuisine Unlimited \* Shane Day \* Beth Dozier-Gallant \* Joy & Bill Erickson \* Gateway Aesthetic Institute & Laser Center \* Mark Hale \* Hearth & Hill Restaurant \* Inspired Summit Adventures \* Neil Kaplan \* Katherine Lynch \* Sharon Mitchell \* Dganit Herzig Slovik & Adam Slovik \* The State Room \* Tiffany & Company - Salt Lake City



# 2019 Jewish Family Service Financial Information



## Tributes



*Donations made to honor, celebrate or memorialize special people & milestones. Thank you for including Jewish Family Service in your thoughtfulness to others.*

In Honor of Anne & Sandy Dolowitz's 55th Wedding Anniversary  
Tom Barman  
Linda Cohen  
Hindy Friedman  
Larry Goldsmith  
Carol McCloud  
Ellen & Barry Silver

Wishing David Dowsett a Speedy Recovery  
Ann & Paul Bernstein  
Ellen & Barry Silver  
Jewish Family Service Board & Staff

In Honor of Vivian & David Dowsett with Congratulations on Ben's Wedding  
Ellen & Barry Silver

Appreciating Joy Erickson's Generosity  
Vivian & David Dowsett

In Honor of Joy Erickson  
Carol & Leonard Raizin

In Honor of Carol Fudyma  
Edward Levine

In Honor of Jim Gebhardt  
Ellen & Barry Silver

In Honor of Carroll Gillmor  
Frances Gillmor

In Honor of David Goldenberg  
Ellen & Barry Silver

In Honor of our Children, Karen & Ira Hammerman  
Elly & Steve Hammerman

In Honor of Lucille Hesse's 60th Birthday  
Lois Spiegel

In Honor of Neil Kaplan  
Joy & Bill Erickson

In Memory of Herbert Katz - Lisa Treiman's Father  
Jack & Darcy Amiel  
Ann & Paul Bernstein  
Vivian & David Dowsett  
Karen Lindau & David Goldenberg  
Denise & Douglas Goldsmith  
Ellen & Barry Silver



# Tributes

In Memory of  
Herbert Katz - Lisa  
Treiman's Father  
Bette & Richard  
Treiman;  
Lisa Treiman  
JFS Board & Staff

In Honor of the Marriage  
of Holly & Daniel Kieda  
Susan & Roger Arsht  
Karen Lindau &  
David Goldenberg  
Lisa Goldstein Kieda &  
David Kieda  
Leslie Eckford &  
Michael Kligman  
Andrea Krupa &  
Dan Reed  
Barbara &  
James S. Schallheim  
Lavine & Alex Shapiro  
Ellen & Barry Silver

In Honor of Lisa Goldstein  
Kieda & David Kieda  
Leslie Eckford &  
Michael Kligman  
Andrea Krupa &  
Dan Reed  
Lavine & Alex Shapiro

In Honor of Eileen Kweller  
Ellen & Barry Silver

In Honor of  
Lisa & David Kieda  
Congratulation on Holly &  
Daniel's Wedding  
Ellen & Barry Silver

In Memory of Theresa &  
Walter Kieda  
Linda Goetz

In Memory of Bill King  
Ann & Paul Bernstein  
Hindy Friedman  
Lynette Lewis  
Susan Schulman

In Honor of the Wedding  
of Hope Moore &  
Hollis King  
Victoria Calevas

In Honor of Carol Kottler  
Ellen & Barry Silver

In Honor of Linda Kottler,  
in Memory of  
Michael Kottler  
Ellen & Barry Silver

In Honor of Dov Lapin's  
BarMitzvah  
Betty &  
Frank Yanowitz

In Honor of Beth Levine  
Ellen & Barry Silver

In Honor of the  
Lebwohl Family  
The Kohl Family,  
Rebecca, Jillian, Melissa  
& Rebecca (daughter)

In Honor of Zachary  
Lebwohl's Bar Mitzvah  
Micah Anderson  
Maria Rubio-Armstrong  
& Logan Armstrong  
Daniel Avrith  
Joy & Bill Erickson  
Stephen Bryant  
Heather Gordon- Freitag  
Lisa & Eric Garland  
Margaret Goldenberg  
Sharyn & Norman  
Goodman  
Debbie &

Mark Ichiyama  
Chelsea & Rob Lebwohl  
Luanne & Michael  
Lebwohl  
Robin & Harold Lebwohl  
Bonnie-Kay &  
Bruce Marks  
Mary McIntyre  
Mica Ruck & Chris Elder  
Ellen & Barry Silver  
Sheila Swanson  
Stephen Bryant

In Loving Memory of Vilma  
& Henry Man  
Joyce & Tom Man

In Honor of Jane  
Marantz's Mother, Ruth  
Ronna Cohen &  
Stan Rosenzweig

In Honor of Carol &  
Ted Levy  
Susan & Richard Braun  
Robin & David Carlin  
Romy & David Cohen  
Melanie & Eliot Cutler  
Jill & Steven Edwards  
Martha & Fred Farkouh  
Jane & Robert Friedman  
Cathy &  
Gerald Goldman  
Mary & Daniel Hoffman  
Marjorie &  
Harry Immerman  
Edward Jereb  
Wendy & Harry Kantor  
Ann & Oliver McBryan  
Dale Atkins & Rob Rosen  
Lavine & Alex Shapiro  
Barbara &  
James S. Schallheim  
Arlene &  
Fred Schragger  
Barbara Gural-  
Steinmetz &  
Thomas Steinmetz  
Pat & Geoff Wolpert  
Carol &  
Robert Zimmerman

In Memory of Marge  
McArthur,  
Sister of Karen McArthur  
Jewish Family Service  
Board & Staff

In Honor of Annette &  
Lester Silverstone  
Naomi Silverstone

In Memory of Sheldon  
Monsey. Thank you (JFS)  
so much for your support  
of, and friendship, to my  
father in the last years of  
his life  
Jill Susskind

In Honor of the Mants  
Family  
Elizabeth Frumin

In Memory of Beth  
Levine's Mother,  
Barbara Noymer  
Ellen & Barry Silver

In Honor of Jackie Osherow  
Congratulations on the  
50th Anniversary of your  
Bat Mitzvah  
Ellen & Barry Silver

In honor of Robin Perley  
Janina Sommers

In Honor of Elaine & Hal  
Pollock  
Sharon Pollock

In Honor of Sue & Robert  
Prottas  
Ellen & Barry Silver

In Memory of  
Daphna Channah Rivera  
Amador Rivera

Wishing Bette Scarlet  
a Speedy Recovery  
Ellen & Barry Silver

In Honor of Maddy  
Shear's Special Birthday  
Ehud & Orly Ardon

In Memory of Phyllis  
Scholnick, Mother of  
Tracy Gruber  
Ellen & Barry Silver  
Jewish Family Service  
Board & Staff

In Honor of Annabel  
Sheinberg  
Carrie Sheinberg &  
Paul Hochman

In Memory of Ruth  
Shirah  
Hindy Friedman

In Honor of Susan  
Schulman  
Ann & Paul Bernstein  
Alyshia & Ross Klein

In Honor of Ellen &  
Barry Silver  
Joanne & Ronald Falcon  
Phyllis Raskin-Hadley  
Barbara & Stephen  
Hecht  
Jan & Richard Holman  
Jackie Osherow  
Joy & David Zweig

Wishing Gordon Spiegel a  
Speedy Recovery  
Betty & Frank Yanowitz  
Jewish Family Service  
Board & Staff



In Honor of  
Rabbi Sam Spector &  
Jill Griffin's Marriage  
Jewish Family Service  
Board & Staff

In Memory of Elaine  
Swartz, Mother of Lee  
Schwartz  
Hindy Friedman

In Loving Memory of the  
Amazing &  
Inspiring Irene  
Tannenbaum  
Mark Baer

In Memory of Irene  
Tannenbaum  
Vivian & David  
Dowsett  
Anne & Robert Goldberg  
Eliana & David White  
Ellen & Barry Silver

In Honor of Martin  
Tannenbaum & Alex  
Ingersoll  
Eliana & David White

In Honor of Lisa Treiman  
Ann & Paul Bernstein  
Ellen & Barry Silver

In Honor of Debra Winkler  
Ellen & Barry Silver



## Tributes



## Thank You for your Caring, Commitment & Generous Donations to Jewish Family Service

-JFS Board, staff, volunteers & especially our grateful clients



Anonymous (8)  
Judith & Donald Adolphson  
Andrea Alcabes  
Gloria & Irwin Altman  
**Darcy & Jack Amiel** ☆  
Elizabeth Anderson  
Micah Anderson  
Pam & David Anisman  
Anonymous  
**Orly & Ehud Ardon**  
Patrice Arent & Dave Mock ☆  
Deborah Lindner &  
Carl Arky מנ  
Maria Lorena Rubio-Armstrong  
& Logan Armstrong  
**Staci & Tony Arnone**  
**Susan & Roger Arsh** ☆  
Anne & David Asman  
Daniel Avrith  
**Amy & Barry Baker** ☆  
Tom Barman  
**Andrea & Richard Barros**  
**Joan Alper & Bill Becker**  
**Renee Ahlers Beckoff &**  
**Steven Beckoff**  
**Harriet & James Berg**  
John Bergerson &  
Shawn Kielty ☆  
Steven Bergman מנ

Boji Berkman  
Kathi & Charlie Bernstein  
Melissa Bernstein  
Ann & Paul Bernstein ☆  
**Bessie Family Foundation**  
Stephen Bloch מנ  
Toni Bloomberg  
Carol Borman  
Judy Russell &  
Howard Bornstein  
Martha Bradley  
**Susan & Richard Braun**  
Sara & Jim Brewer  
Anne & Darrel Brodke ☆  
Cynthia & Adam Bronfman ☆  
Marsha & Edwin Bronsky ☆  
Ellie & Peter Brownstein ☆  
**Linda & Neil Brownstein**  
Cherie & Thomas Brunker  
Stephen Bryant  
Julie & Dave Burdett מנ  
Ellen & Danny Burman  
Victoria Calevas  
Carla & Mark Cantor מנ ☆  
Nancy Cantor  
**Danielle & Reid Capalino**  
**Dedee & Brian Caplin**  
**Robin & David Carlin**  
**Nancy & Howard Carrey**

Brook Chidester  
Emily Christensen  
Orlene & Alan Cohen  
Dara Cohen & Jessica Shade  
**Romy & David Cohen**  
Linda Cohen  
Lynn & Bruce Cohen ☆  
**JoAnn Goldman &**  
**Phil Collins**  
Pati & Val Comes מנ  
Roxana Cordova  
**Louise Pearson &**  
**Grant Couch**  
Jeanne Crockett  
Helene & John Cuomo  
**Karen Curtin**  
**Melanie & Eliot Cutler**  
**Mary Gootjes & John Davis** ☆  
Sherman Davis  
Julie & Babs De Lay  
Linda & Brad Demsey  
Cathy & Robert Dern ☆  
Laurel Casjens &  
Carleton DeTar  
**Kellie Peden &**  
**Daniel Diamond**  
Deborah Dick  
Christine Coleman &  
John Dickey מנ



Joyce & Jack Dolcourt  
Anne & Sandy Dolowitz ✨  
Vivian & David Dowsett ✨  
Isabel Dulfano  
Robin Wilks-Dunn &  
Sam Dunn  
**Miriam & Bruce Eatchel**  
**Jill & Steven Edwards**  
Carol & Jerry Einhorn  
Rita & Sheldon Elman  
Lynn & Joel Elstein  
Michele & Edward Endemano  
**Carolyne & Jerome Epstein**  
Joy & Bill Erickson ✨  
Judy & Floyd Eschler  
Toba & Ron Essig ✨  
Paula & Gary Evershed  
**Farkouh, Furman & Faccio LLC**  
Joanne & Ronald Falcon  
**Martha & Fred Farkouh**  
Cindy & Barry Feinman מנ  
Elizabeth & Neil Fellows מנ  
Nicole & Scott Fenwick  
Joy & Simon Fisher  
Jacqueline & Alan Fogel  
Naomi Franklin ✨  
Linda & Roger Freedman  
Nancy & Daniel Freifeld  
**Lucy & Bill Friedman** ✨  
Hindy Friedman  
**Jane & Robert Friedman**  
Sharon Friedman  
Elizabeth Frumin  
Mindy McAnulty &  
Ed Ganellen  
Lisa & Eric Garland  
Kelly Davis Garrett &  
Tim Garrett ✨  
Caroline Gaudy  
Lucille Hesse &  
Jim Gebhardt ✨  
**Marilyn & Robert Gellert**  
**Sheila & Marty Gelman** ✨

Frances Gillmor  
Jean Glaser  
Camille Pierce & Steven Glaser  
Dennis Glass  
Kathryn Whitehead  
Goddard & Tony Goddard ✨  
Linda Goetz  
Jeannie & Ralph Golberg  
Aaron Goldberg  
Anne & Bob Goldberg  
Karen Lindau &  
David Goldenberg ✨  
Margaret Goldenberg  
Shari Gottlieb & Greg  
Golding ✨  
Eric Goldman  
**Cathy & Gerry Goldman**  
Marcey & Stuart Goldner  
Denise & Doug Goldsmith ✨  
Larry Goldsmith  
Sharon & Michael Goldstone  
**Amy & Ken Goodman**  
Sharyn & Norman Goodman  
Hope & Allen Gordon  
Donna & Jeffrey Gordon  
Rosanne & Robert Gordon  
Heather Gordon-Freitag  
Joelle Kanshepolsky &  
Andy Gotshalk מנ  
Carolyn Kraft & David Grauer  
Abby Green  
**Susanna & David Green**  
**Carolyn &**  
**Myles Greenberg** ✨ מנ  
**Michael Greenfield**  
**Corree & Bill Grodnik** ✨  
Jody & Stewart Gross ✨  
Karen McArthur &  
Bernie Grosser  
Tracy & Andrew Gruber  
Connie Gruber  
Ellen Wilson &  
David Grunwald

**Jennifer Gurs**  
Patty Linden & Fred Gysi  
Reyna & Stan Hadar  
Elly & Steve Hammerman  
Karen & Bill Handler  
Barbara & Stephen Hecht  
Joanna Charnes &  
Steve Hegerfeld  
Rachael & Dusty Heist-Levine  
Nedda Hendler  
**Pamela &**  
**Stanley Herskovitz**  
Linda Hilton  
Cindy &  
Howard Hochhauser ✨  
Carrie Sheinberg &  
Paul Hochman  
**Mary & Dan Hoffman**  
Jan & Richard Holman  
**Rosemary & Reed Holt**  
Sherry & Ray Hoobler  
Barbara &  
Michael Horowitz  
**Patricia Kravtin &**  
**Jonathan Horwitz**  
**Lynne Wimmer &**  
**Dan Hudson (z'l)**  
Liz Hunt  
Deborah Ichiyama  
**Marjorie &**  
**Harry Immerman**  
Jennifer & Hank Israel  
Cindy & Stephen Jacobs  
Julie & Jay Jacobson ✨  
Helene & Richard Jaffe  
MJ Jagodzinski  
**Edward Jereb**  
Paula Green Johnson &  
Peter Johnson  
Julia Jones  
Jamie McDonald &  
Brian Kamm  
**Wendy & Harry Kantor**

Andrea & David Kaplan מנ  
Neil Kaplan מנ ✨  
Malka Kassel  
Tracey Conrad &  
Brad Katz  
Elana Amsterdam &  
Robert Katz ✨  
Joyce & Leslie Kelen  
Maria Richter & Bill Kelly  
Lisa Cohne &  
Siamak Khadjenoury  
**Linda Kieda**  
**Lisa Goldstein Kieda &**  
**David Kieda** ✨  
**Zachary Kieda**  
**Sara & Jonathan Klein** ✨  
Alyshia & Ross Klein  
Sheila & Scott Klepper  
Phyllis Mandel &  
David Kliger  
Leslie Eckford &  
Michael Kligman  
The Kohl Family  
**Carol & Dan (z'l) Kotler**  
Linda Kottler  
Izabella & Vladimir Kratser  
Susan & Guy LaMere  
**Madeline & Peter Landau**  
Fran & Gary Lapin ✨  
Debbie &  
Howard Leaman ✨  
Robin & Harold Lebwohl ✨  
Casey & Jason Lebwohl ✨  
Luanne & Michael Lebwohl  
Chelsea & Rob Lebwohl  
**Marcia & Alan Leifer**  
Edward Levine  
Kate Phillippo &  
Rabbi David Levinsky  
Cara & Michael Levinson  
Nicole & David Levy ✨  
**Kelsey Osgood &**  
**Matthew Levy**

**Carol & Ted Levy** ✨  
Lynnette Lewis  
**Barbara Hylander &**  
**Herb Lichtenstein** ✨  
Kyleene Johnson &  
Josh Lipman  
**Rochelle Kaplan &**  
**Art Lipson** ✨  
Erin & David Litvack מנ ✨  
Amanda & Yotam Livnat  
James Lo  
Nomi & Laury Loeb  
Liz Tashjian &  
Uri Loewenstein ✨  
Beatrice Lufkin  
**Katherine Lynch** ✨  
Kathy MacGregor  
Alex Mack & Elliot Smith  
Robert Maestas  
**Maizlish Family Foundation** ✨  
Phyllis Maizlish ✨  
Erinn & Scott Maizlish ✨  
Joyce & Tom Man  
**Natalie & Sidney Marder**  
Bonnie-Kay & Bruce Marks  
**Noemi & Dan Mattis** ✨  
Robert Mayer  
**Ann & Oliver McBryan**  
Mary & Thomas McCarthey ✨  
Carol McCloud  
Joanne McGillis ✨  
Mary McIntyre  
**Therese & Frederick Milad**  
Donna Milavetz ✨  
Judy & Steven Miller  
Shelly & Jon Monk  
**Murray Utah Arts Council**  
Phyllis & Philip Nathanson  
Karen Nielsen-Anson  
**Hilary & Ben Nitka**  
Susan Cook Northway  
Wilma Odell  
Michelle & David Oelsner מנ ✨

Amy & Elan Omessi  
Drora & Michael Oren  
Jackie Osherow  
**Elissa & Bill Oshinsky** ✨  
Liz Paige &  
Woody Crowell מנ  
Cheryl Ann Palmer  
Cindy & Steve Panish ✨ מנ  
**Park City Men's Lunch Group**  
Daniel Parker  
Mark & Steven Parker  
Marty Slattery & Mort Pellatt  
Lois & Mitchel Perkiel  
**Jane & Vincent Perla**  
Robin Perley  
Rebecca Raybould &  
Aksel Peterson  
**Dyan & Jim Pignatelli**  
Mark Pittman  
Nano & Gilbert Podolsky  
Sally Jablon &  
Richard Pohl מנ  
Elaine & Hal Pollock ✨  
Sharon Pollock  
Ann Hashimoto & Hal Pos ✨  
**Jill Prosky & James Posner**  
Nancy & Richard Potashner ✨  
Mary Jane & Taft Price  
Sue & Robert Prottas ✨  
Shaina Miron & Tyler Quinn  
**Alix & Sean Railton**  
Carol & Leonard Raizin  
**Helen & Rick Rappaport** ✨  
Phyllis Raskin-Hadley  
Dick Raybould  
Andrea Krupa & Dan Reed  
Mary & Arnold Richer  
Amador Rivera, Jr  
Isabel & Aaron Rokeach  
Bonnie & Steve Rokeach  
**Dale Atkins & Rob Rosen**  
**Ronna Cohen &**  
**Stan Rosenzweig** ✨

Ginny & Gerry Rothstein  
 Mica & Chris Ruck Elder  
 Jennifer & Steven Rusk  
 Shanti Deemyad &  
 Saveez Safferian  
 Alle Salazar &  
 Brennan Adams  
**Ingrid &**  
**Charles Saltzman**  
 Kathy & Lynn Samsel  
 Annie & Art Sandler  
**Susan Sandack**  
 Bette & Jon Scarlet  
 Chad Schaeffer  
 Barbara & Jim Schallheim  
**Arlene &**  
**Frederic Schragger**  
**Susan Schulman** ☆  
 Pete Schwager  
**Shelley & Steven Schwartz**  
 Shelly & Steven  
 Chad Seale  
**Lavine & Alex Shapiro**  
 Daniel Shapiro מנ  
**Jill & Richard Sheinberg**  
 Bonnie Shepherd  
 Mara Rabin &  
 Kevin Shilling  
 Staci Shore  
 Phyllis & Stewart Shostak  
 Diane & Dan Siegel  
 Geri & Gordon Siegel  
 Ellen & Barry Silver ☆  
 Andrea & Jeff Silver ☆  
 Ruth &  
 Jonathan Silverstein  
 Naomi Silverstone  
 David Simon  
 Dganit Herzig Slovik &  
 Adam Slovik מנ  
 JoLene Snyder  
 Jodie & Barry Sobel ☆  
 Beano Solomon ☆

Jania Sommers  
 Jill Goffin &  
 Rabbi Sam Spector  
 Carolina Hazman &  
 Jeremy Spekman מנ  
 Lois Spiegel  
 Elana Spitzberg &  
 Avi Markowitz  
**Alan Stackman**  
 Nancy Sherman &  
 Ralph Stanislaw  
 Susan & Melvin Steinhart  
**Barbara Gural-Steinmetz**  
**& Thomas Steinmetz** ☆  
 Melissa & Marc Sternfield  
 Tracy & Larry Stevens  
 Lori Krasny &  
 Jeff Stevenson  
 Tina Straley  
 Jill Susskind  
 Sheila Swanson  
**Freida & Harvey Sweitzer**  
 Nancy Tallman Schwartz  
 Ira Tannenbaum  
 Marty Tannenbaum &  
 Alex Ingersoll ☆  
**Joanne Bloom &**  
**Thomas Tanzer** ☆  
 Rachel Benator &  
 Randy Tillery ☆ מנ  
 Kay & Arnie Tran  
 Lisa & Jerry Treiman ☆  
 Bette & Richard Treiman  
 Joanne Slotnik &  
 Steve Trimble  
 Miriam Turner  
 Katie Ullman &  
 Daniel Wettstein  
 Polly & Jeff Unruh  
**Barbara & Serge Vinograd**  
 The Voros Family  
 Cecilia Wainryb  
 Marilyn & Richard Wallin

Phyllis Walton  
**Diane Hartz Warsoff &**  
**Art Warsoff**  
**Rosalie & Jerry Weider**  
 Bernard Wein ☆  
**Laura Kessler &**  
**Matthew Weinstein**  
**Rachel Kessler Weinstein**  
 Gina Dalton & Larry Weiss  
 Rochelle &  
 Rabbi Fred Wenger  
 Eliana & David White  
 Marilyn & Paul Whitehead  
 Debra Winkler מנ  
 Amy & Sam Winkler  
 Paige & Ben Witt  
 Jayla & Doug Wolfe ☆  
 Azure & Jeffery Wolfe  
 Judy Wolfe ☆  
 Julie Wolfe  
 Michael Wolfe ☆  
 Carol & Robert Wolff ☆  
**Pat & Geoff Wolpert**  
**Joanne Yaffe**  
 Betty & Frank Yanowitz ☆  
 Sherry Zemlick  
 Carol & Robert Zimmerman  
**Terri & Stan Zions**  
 Sheina &  
 Rabbi Avremi Zippel  
 Paul Zuckerman  
 Joy & David Zweig

☆ Indicates members of the Chai Society, who make an annual gift of \$1,800 or greater.

מנ Indicates "Monthly Mensch" donors who make a perpetual monthly gift.

**Purple** indicates donations to The Refugee Assistance Fund.

**Green** indicates donations to the Caregiver Support Fund.

**Blue** indicates donations to the Walter & Theresa Kieda Self-Sufficiency Fund.